



<b>APARTMENT NUMBER</b>	901	1001	1101	1201	1301	1401	1501
<b>LEVEL</b>	9	10	11	12	13	14	15

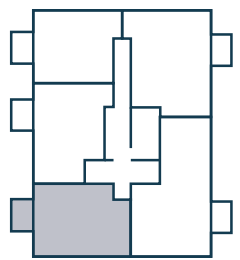
♿

# 1 BEDROOM APARTMENT

# KIDBROOKE SQUARE



<b>Living/Dining Room</b>	<b>Kitchen</b>
6.56m x 3.38m 21'6" x 11'1"	2.71m x 2.70m 8'10" x 8'10"
<b>Bedroom</b>	<b>Balcony</b>
5.25m x 3.19m 17'3" x 10'5"	3.15m x 1.91m 10'4" x 6'3"
<b>Total Internal Area</b>	
58.3 sq m 628 sq ft	



KEY: DW = Dishwasher, FF = Fridge Freezer, HIU = Heat Interface Unit,  
S = Store, W = Wardrobe, WD = Washer/Dryer, ♿ = Wheelchair adaptable apartment

The floorplans depict a typical layout of this apartment type. For exact plot specification, details of external and internal finishes, dimensions and floorplan differences, consult your Sales Executive. Any areas, measurements or distances quoted are approximate only and should not be used when ordering floor coverings or furnishings. Floorplans are not shown to scale.