



# GALE HOUSE

1 & 2 BEDROOM  
SHARED OWNERSHIP APARTMENTS



KIDBROOKE SQUARE  
SE3



# WELCOME TO GALE HOUSE

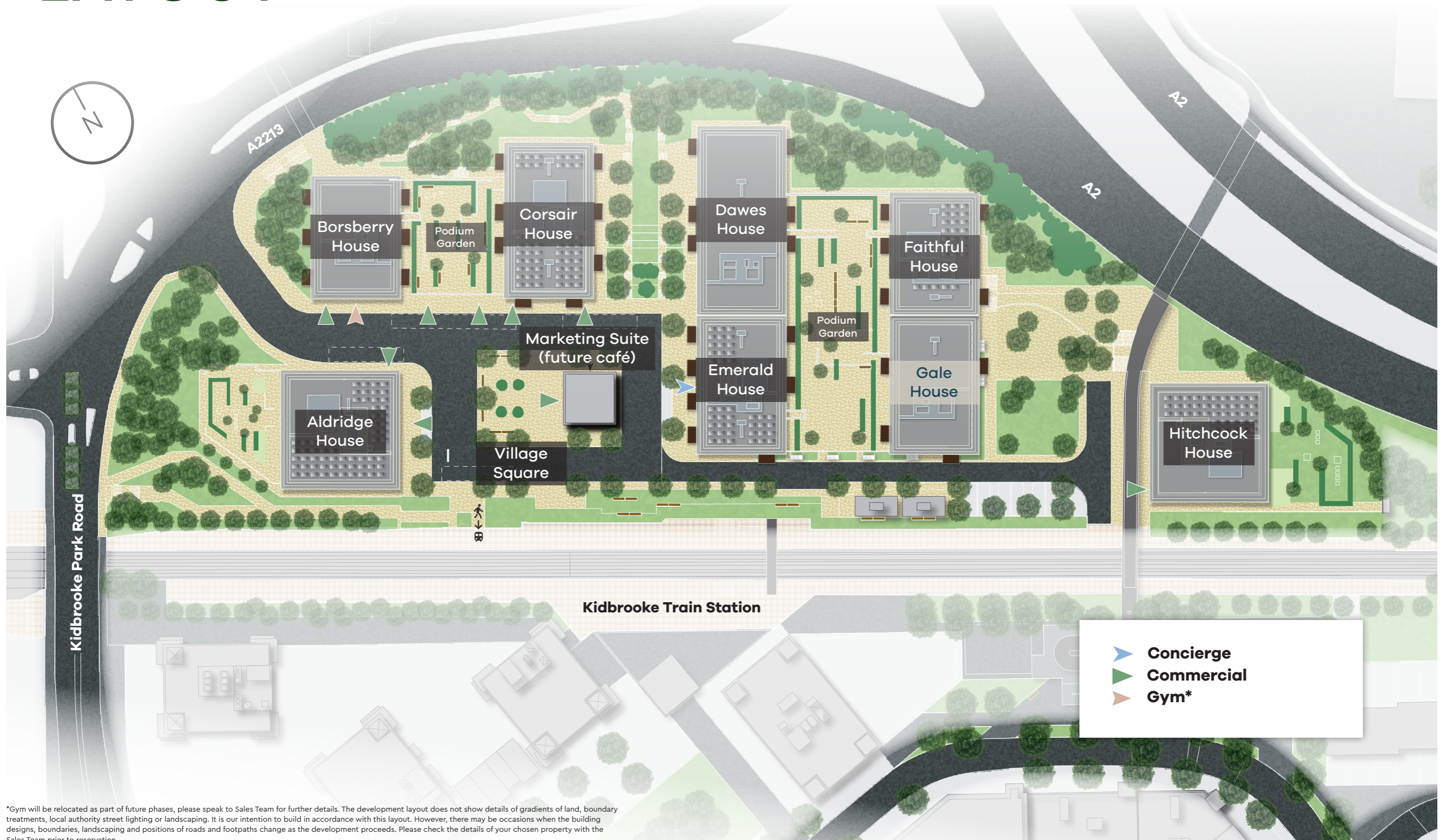
Modern Shared Ownership homes set in an ideal location.  
This development is surrounded by green space and residential courtyards.  
A new home at Kidbrooke Square offers the best of connections,  
community and amenities.



Computer generated image of Gale House & Faithful House.



# DEVELOPMENT LAYOUT



\*Gym will be relocated as part of future phases, please speak to Sales Team for further details. The development layout does not show details of gradients of land, boundary treatments, local authority street lighting or landscaping. It is our intention to build in accordance with this layout. However, there may be occasions when the building designs, boundaries, landscaping and positions of roads and footpaths change as the development proceeds. Please check the details of your chosen property with the Sales Team prior to reservation.



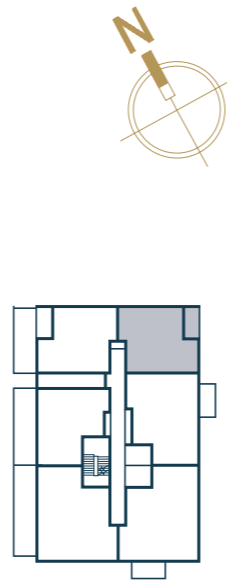


APARTMENT NUMBER	201	301	401	501	601	701	801
LEVEL	2	3	4	5	6	7	8



Living/Dining Room	Kitchen
4.81m x 3.60m 15'10" x 11'10"	3.20m x 2.00m 10'6" x 6'7"
Bedroom	Balcony
4.23m x 3.22m 13'9" x 10'7"	3.04m x 1.39m 9'11" x 4'7"
Total Internal Area	
50.4 sq m 543 sq ft	

KEY: DW = Dishwasher, FF = Fridge Freezer, HIU = Heat Interface Unit, S = Store, W = Wardrobe, WD = Washer/Dryer



The floorplans depict a typical layout of this apartment type. For exact plot specification, details of external and internal finishes, dimensions and floorplan differences, consult your Sales Executive. Any areas, measurements or distances quoted are approximate only and should not be used when ordering floor coverings or furnishings. Floorplans are not shown to scale.

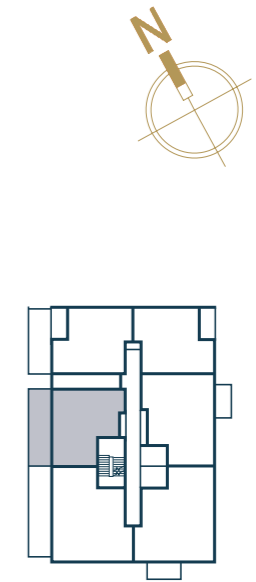


APARTMENT NUMBER	205
LEVEL	2



Living/Dining Room	Kitchen
5.27m x 2.74m 17'3" x 8'11"	3.00m x 1.80m 9'10" x 5'10"
Bedroom	Terrace
4.54m x 2.8m 14'10" x 9'2"	8.81m x 2.2m 28'10" x 7'2"
Total Internal Area	
50.5 sq m 544 sq ft	

KEY: DW = Dishwasher, FF = Fridge Freezer, HIU = Heat Interface Unit, S = Store, WD = Washer/Dryer



The floorplans depict a typical layout of this apartment type. For exact plot specification, details of external and internal finishes, dimensions and floorplan differences, consult your Sales Executive. Any areas, measurements or distances quoted are approximate only and should not be used when ordering floor coverings or furnishings. Floorplans are not shown to scale.





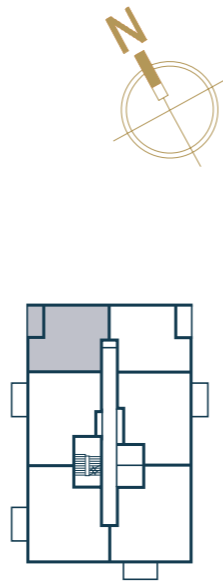
APARTMENT NUMBER	306	406	506	606	706	806
LEVEL	3	4	5	6	7	8

1 BEDROOM APARTMENT



Living/Dining Room	Kitchen
4.82m x 3.60m 15'10" x 11'10"	3.20m x 2.00m 10'6" x 6'7"
Bedroom	Balcony
4.19m x 3.33m 13'9" x 10'11"	3.04m x 1.39m 9'11" x 4'7"
Total Internal Area	
50.7 sq m 546 sq ft	

KEY: DW = Dishwasher, FF = Fridge Freezer, HIU = Heat Interface Unit, S = Store, W = Wardrobe, WD = Washer/Dryer



The floorplans depict a typical layout of this apartment type. For exact plot specification, details of external and internal finishes, dimensions and floorplan differences, consult your Sales Executive. Any areas, measurements or distances quoted are approximate only and should not be used when ordering floor coverings or furnishings. Floorplans are not shown to scale.

KIDBROOKE SQUARE

APARTMENT NUMBER	305	405	505	605	705	805
LEVEL	3	4	5	6	7	8

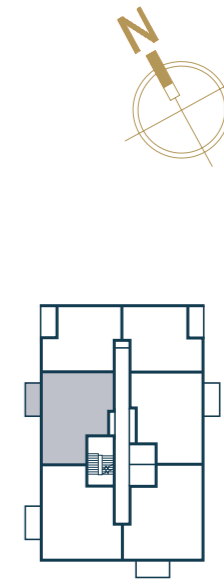


2 BEDROOM APARTMENT



Living/Dining Room	Kitchen
7.56m x 3.44m 24'9" x 11'3"	2.60m x 2.20m 8'6" x 7'2"
Bedroom 1	Bedroom 2
4.21m x 3.48m 13'9" x 11'5"	3.86m x 2.75m 12'8" x 9'0"
Balcony	Total Internal Area
3.6m x 1.61m 11'9" x 5'3"	62.5 sq m 673 sq ft

KEY: DW = Dishwasher, FF = Fridge Freezer, HIU = Heat Interface Unit, S = Store, W = Wardrobe, WD = Washer/Dryer



The floorplans depict a typical layout of this apartment type. For exact plot specification, details of external and internal finishes, dimensions and floorplan differences, consult your Sales Executive. Any areas, measurements or distances quoted are approximate only and should not be used when ordering floor coverings or furnishings. Floorplans are not shown to scale.

KIDBROOKE SQUARE

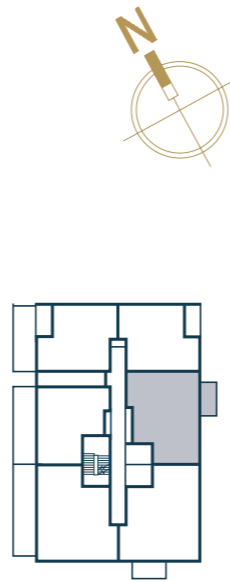


APARTMENT NUMBER	202	302	402	502	602	702	802
LEVEL	2	3	4	5	6	7	8



<b>Living/Dining Room</b>	<b>Kitchen</b>
5.10m x 3.54m 16'8" x 11'7"	3.60m x 1.81m 11'9" x 5'11"
<b>Bedroom 1</b>	<b>Bedroom 2</b>
4.72m x 3.48m 15'5" x 11'5"	3.81m x 2.65m 12'5" x 8'8"
<b>Balcony</b>	<b>Total Internal Area</b>
3.6m x 1.61m 11'9" x 5'3"	65.3 sq m 703 sq ft

KEY: DW = Dishwasher, FF = Fridge Freezer, HIU = Heat Interface Unit, S = Store, W = Wardrobe, WD = Washer/Dryer



The floorplans depict a typical layout of this apartment type. For exact plot specification, details of external and internal finishes, dimensions and floorplan differences, consult your Sales Executive. Any areas, measurements or distances quoted are approximate only and should not be used when ordering floor coverings or furnishings. Floorplans are not shown to scale.

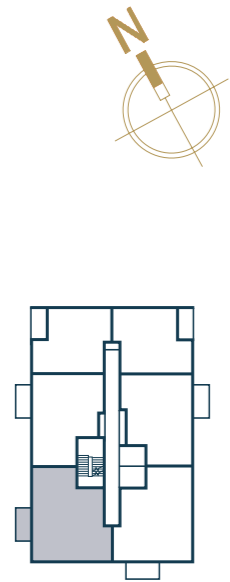


APARTMENT NUMBER	304	404	504	604	704	804
LEVEL	3	4	5	6	7	8



<b>Living/Dining Room</b>	<b>Kitchen</b>
6.49m x 3.27m 21'3" x 10'9"	2.70m x 2.64m 8'10" x 8'8"
<b>Bedroom 1</b>	<b>Bedroom 2</b>
3.71m x 2.94m 12'2" x 9'8"	3.96m x 2.90m 13' x 9'6"
<b>Balcony</b>	<b>Total Internal Area</b>
3.6m x 1.61m 11'10" x 5'3"	72.4 sq m 780 sq ft

KEY: DW = Dishwasher, FF = Fridge Freezer, HIU = Heat Interface Unit, S = Store, W = Wardrobe, WD = Washer/Dryer



The floorplans depict a typical layout of this apartment type. For exact plot specification, details of external and internal finishes, dimensions and floorplan differences, consult your Sales Executive. Any areas, measurements or distances quoted are approximate only and should not be used when ordering floor coverings or furnishings. Floorplans are not shown to scale.



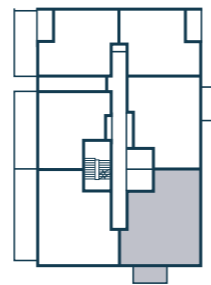


APARTMENT NUMBER	203	303	403	503	603	703	803
LEVEL	2	3	4	5	6	7	8



<b>Living/Dining Room</b>	<b>Kitchen</b>
6.49m x 3.27m 21'3" x 10'9"	2.70m x 2.64m 8'10" x 8'8"
<b>Bedroom 1</b>	<b>Bedroom 2</b>
3.71m x 3.02m 12'2" x 9'11"	3.96m x 2.90m 13' x 9'6"
<b>Balcony</b>	<b>Total Internal Area</b>
3.60m x 1.61m 11'10" x 5'3"	72.7 sq m 783 sq ft

KEY: DW = Dishwasher, FF = Fridge Freezer, HIU = Heat Interface Unit,  
S = Store, W = Wardrobe, WD = Washer/Dryer



Computer generated image of an apartment at Kidbrooke Square.

The floorplans depict a typical layout of this apartment type. For exact plot specification, details of external and internal finishes, dimensions and floorplan differences, consult your Sales Executive. Any areas, measurements or distances quoted are approximate only and should not be used when ordering floor coverings or furnishings. Floorplans are not shown to scale.







# IT'S ALL IN THE DETAIL

These Shared Ownership apartments are light, comfortable and beautifully finished, with flexible spaces where you can work, relax and entertain.

## KITCHEN

- Sleek handleless modular design kitchen in silk grey
- Feature open shelving in wood effect natural oak
- White Corian worktop with undermounted stainless steel bowl sink
- Contemporary monobloc chrome tap
- Zanussi NHRN64OK hob and canopy extractor fan
- Zanussi integrated electric single oven
- A range of kitchen appliances including Zanussi integrated fridge-freezer and dishwasher
- Ceramic tiled splashback in gloss white between worktops and kitchen units
- Under cupboard LED lighting
- Wood effect natural strip flooring to hall, living area and kitchen
- Brushed stainless steel sockets and switches in the kitchen

## BATHROOM & EN SUITE

- Porcelain floor tiles in matt colour stone with matching skirting
- Ceramic wall tiles in gloss white and grey tones
- Bath with chrome thermostatic bath and shower wall mounted mixer and clear glass bath screen with silver detailing to main bathroom
- White semi-recessed basin
- White ceramic WC with concealed cistern and soft-close toilet seat
- Shower set with clear glass screen and chrome shower mixer to en suite
- Mirrored cabinet with integrated ambient lighting
- Chrome finish heated towel rail
- Feature open shelving in wood effect natural oak



## BEDROOM

- Fitted 80/20 wool silver carpet to bedrooms
- Built-in wardrobe with sliding mirrored doors to bedroom 1

## GENERAL

- Smooth finished ceilings emulsioned in white to complement the emulsioned finish of the interior walls
- Communal gas-fired central heating system serving white radiators with individual thermostat controls
- Flush internal doors painted white with brushed stainless steel ironmongery
- Zanussi ZWD86SB4PW freestanding washer dryer to utility cupboard (see individual plans)
- TV, Sky Q & broadband enabled points (broadband and telephone services require subscription at extra cost)
- USB ports available to bedrooms and living room
- Low energy LED white downlighters throughout

## SECURITY & PEACE OF MIND

- 10-year NHBC build warranty
- Audio visual door entry system
- Concierge service

## EXTERNAL & COMMUNAL AREAS

- Two passenger lifts located within the entrance lobby
- Matt grey tiled flooring to entrance lobby and carpets to communal corridors
- Landscaped gardens
- Secure communal cycle storage

## BALCONY

- Steel balcony with aluminium decking and balustrade
- External LED recessed downlighter



Computer generated images are for indicative purposes only.

A range of optional upgrades is available subject to build stage. Please speak to your Sales Executive for further details. Specifications are correct at time of going to print, but are subject to change without notice. Please contact the Sales Executive for further information. Specifications are correct at time of going to print, but are subject to change without notice. Please contact the Sales Team for further information.





Computer generated image of shared green space between Dawes House, Emerald House, Faithful House & Gale House.



# BUYING YOUR NEW HOME AT KIDBROOKE SQUARE WITH SHARED OWNERSHIP

Shared Ownership\* is a Government-funded scheme designed to help people buy a home of their own. You buy a share of between 25% and 75% of the home's full market value and pay a subsidised rent on the remainder, with the option to increase the share you own when you can afford to (known as 'staircasing').

## FIND

---

### 1. Start your journey

Choose the right home for you by visiting our website or giving us a call. Tell us what you are looking for and we will answer any questions you have.

### 2. Are you eligible?

Complete the online application form. We'll check your form to see if you've met the overall criteria for Shared Ownership and whether it is affordable for you.

### 3. Check out the development

Book your viewing at Kidbrooke Square with our Sales Team.

## APPLY

---

### 4. Select your preferred home

Have you seen something you like? Tell us which apartment is your preferred one.

### 5. We offer you a home

We'll try to offer you your preferred home. If we can't, we'll look to offer you a similar home at Kidbrooke Square or at another development of ours.

### 6. Purchasing interview

You'll supply evidence of your income, savings and other required information to one of our Specialist Financial Advisors. They will review whether buying the home is affordable for you in more detail and will look to find the right mortgage deal available to you. A member of the Sales Team will then contact you (usually by phone) to discuss the outcome of the review and explain the buying process in more detail.

## BUY

---

### 7. Instruct your solicitor

When you instruct a solicitor you will also need to pay your reservation fee and apply for a mortgage.

### 8. Exchange of contracts

You're nearly there – exchanging contracts means that everything is tied up. We've legally agreed to sell you the home and you've agreed to buy it.

### 9. Home demonstration

When the building is ready, we'll invite you to see your home before you move in. We'll give you a resident's manual and make sure you are familiar with key features such as kitchen appliances, heating and security systems.

### 10. Legal completion

Reaching legal completion means you have bought your home and can move in. Congratulations, you are now a homeowner at Kidbrooke Square!







Marketing Suite  
Pavilion Building  
8 Henley Cross  
Kidbrooke, London  
SE3 9JU

**KIDBROOKESQUARE.CO.UK**

**020 3797 4707**

---

A PARTNERSHIP BETWEEN

